

If you pressure the hall from St. Cloud to Lake Nona or proceed north in the direction of the University of Central Florida, you study the rhythms of site visitors and the quirks of each route. Morning backups can start out on Narcoossee Road close Boggy Creek by 7:30. Weekend site visitors swells around Lakefront Park and US 192 as boats head for East Lake Tohopekaliga. Construction cones can manifest overnight along SR 417 and modification the total equation. The course looks fundamental on a map, but while a auto falters in the incorrect spot, a regular pressure turns tense fast. That is the place a nicely-planned towing carrier becomes more than a smartphone call. It is a recreation of minutes, judgment, and nearby experience.

I have hauled sedans off the shoulder with the aid of the Medical City exit with ORMC ambulances zipping beyond. I even have winched trucks from median grass close to the Central Florida GreeneWay when a trailer fishtailed on wet pavement. Plenty of days quit quietly with a flat tire change within the parking lanes along City Hall or a speedy start in Anthem Park after a forgotten dome easy tired a battery. Each process has its possess logistics, however the goal is regularly the equal: get you and your vehicle protected, speedy, and with no surprises.

How towing from St. Cloud to Lake Nona and the University Area somewhat works

The notice "towing" makes it sound like a single provider. In follow, tow truck services fall into a couple of buckets, and the good one relies to your vehicle, the limitation, and where you might be stuck. On the St. Cloud to Lake Nona and UCF runs, we see patterns. Commuters in crossovers and compact SUVs most usually desire roadside aid around Narcoossee and Laureate Park. Students piloting older sedans within the University Area generally tend to name for no-starts off or overheating close Central Florida Research Park and along Alafaya Trail. Lake Nona's more recent roads are forgiving, however curbs are tall. U-turns can lure a wheel if a driving force cuts too tight inside the dark or for the duration of summer season downpours.

Flatbeds continue to be the safest collection for all-wheel-power trucks and for broken suspensions. Wheel-lift vans shine on crowded shoulders or parking garages close to Lake Nona Town Center and UCF's garages, wherein manner angles are tight. If you blew a tire on the Florida Turnpike south of the Canoe Creek Service Plaza, a swift-reaction roadside suggestions unit could get you rolling in ten mins with a spare hooked up and a torque wrench take a look at. A lifeless battery behind the Valencia College Lake Nona Campus calls for a high-output jump box, no longer a fantastic Samaritan's jumper cables. Right software, exact spot.

On commute time, context concerns. From L.I Roadside Care & Towing's base on Bull Street, such a lot Lake Nona calls reasonable 20 to 35 minutes to arrival based at the hour and weather. The University Area, principally the north aspect of UCF and the Waterford Lakes Town Center place, takes longer, generally 35 to fifty five mins. Crash-associated backups on SR 417 can stretch that by means of an alternative ten to 15. We do no longer wager. We fee Waze, FHP incident feeds, and live traffic cams earlier than dispatching, then plan the route to want good exits and riskless staging parts.

Neighborhood-by using-region insight that shortens the wait

Knowing St. Cloud's neighborhoods is helping with equally routing and pickup positions. If your SUV loses a belt near Stevens Plantation, we can level on the Neptune Road median damage to keep the truck out of flip lanes. Breakdowns in Esprit or Mallard Pond broadly speaking suggest residential entry matters, so we use lightbar positioning to maintain sightlines transparent for tuition buses and morning walkers, tremendously round Canoe Creek Charter Academy traffic. Anthem Park has loads of roundabouts that complicate flatbed angles; we'll have

you ever pull ahead to the closest straightaway if the car can creep several yards. Pine Lake Estates, with its near-set driveways, advantages from a wheel-lift in tight quarters whilst pals' vehicles line the road on a Friday night time.

Outside the neighborhoods, landmarks guideline dependable rendezvous elements. By the St. Cloud Heritage Museum or the Lakefront Park Marina, we pick the boat ramp overflow area for swaps and tie-down assessments. Old Canoe Creek Road has slim shoulders close the Royal St. Cloud Golf Links, so we ceaselessly shepherd a rolling car into the parking pull-off simply past the clubhouse entrance. On US 192 close the St. Cloud Twin Theatres or Hopkins Park, afternoon deliveries need further cones with the aid of foot visitors. The level isn't always to point out off local trivia. It is to show a dangerous roadside obstacle into a managed setting inside a minute or two of arriving.

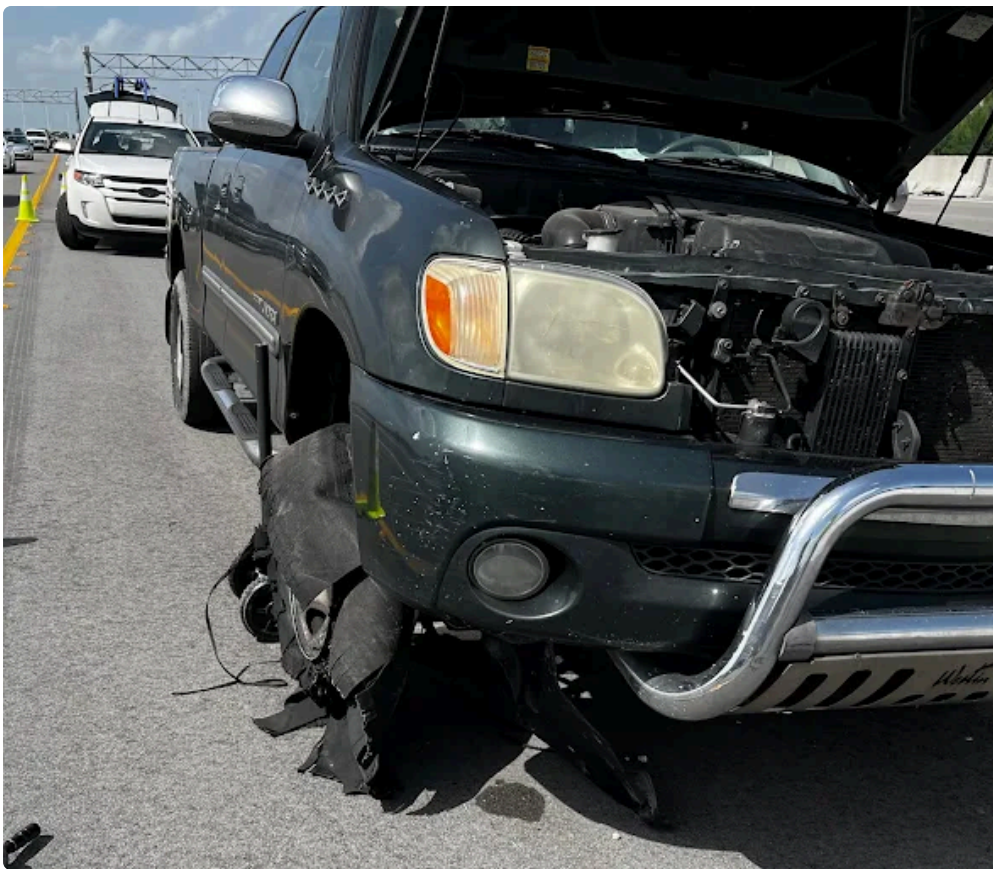
The pass-city triangle: St. Cloud, Lake Nona, and the University Area

Lake Nona and UCF are night-and-day in velocity and design, but the towing challenges rhyme. Lake Nona's Medical City - feel Nemours, the VA Medical Center, and UCF College of Medicine - brings comfortable pickups in which patients or team have tiny home windows. A nurse ending a 12-hour shift won't be able to wait an hour by means of a dim garage stairwell. We park with probability triangles, use speedy-hooks, then clear the deck house so the handoff to a mechanic in Moss Park or Vista East happens on schedule. Traffic flows are predictable round Laureate Park, but storms pool water briefly near Tavistock Lakes Boulevard. If your hybrid takes a dash and throws codes, step one is to isolate the 12-volt system and affirm standing lights earlier than loading.

Closer to UCF, the tempo rises. Midday along University Boulevard, automobiles exit a great deal in tight streams and shoulders are pinched. We sometimes marketing consultant [L.I Roadside Care lockout service](#) drivers into the Research Park's wider lanes or a gasoline station apron beforehand loading. Students frequently deliver a trunk complete of life - dorm packing containers, guitars, foldable bikes - that substitute automobile weight steadiness at the flatbed. We safe both the auto and loose shipment considering that a demanding brake near Econlockhatchee can shift things you probably did no longer expect to go.

Roadside counsel that stops a tow

Not every name becomes a tow truck story. The quiet wins come from sensible roadside assistance. A latest battery test can inform you if a bounce will preserve using dinner at Lake Nona Town Center or once you are on borrowed time. If a tire hisses from a roofing nail picked up near Hickory Tree Road development, a plug also can buy you 3 days, yet we can be fair if the sidewall is compromised and towing is the more secure direction.



Here is a crisp checklist that allows whereas you watch for assistance, specially on SR 417 or Narcoossee at dusk:

- Move to the rightmost reliable spot, even supposing it approach creeping on a rim for 50 toes. A managed tire difference beats a super wheel kept in a blind curve.
- Set risks, then vicinity your self at the back of a barrier if purchasable. Seatbelts live on for those who shouldn't exit correctly.
- Note your mile marker or the closest pass boulevard. Screenshots lend a hand in case your cell GPS drifts.
- Keep your risks on and your doorways locked. Crack a window to hear commands while the truck arrives.
- If you odor fuel or see fluids streaming, lower the engine and retain all ignition assets away.

Small steps like these shave mins and scale back threat. They also lend a hand the tow truck operator plan regardless of whether to manner nose-first or lower back-in for a quicker hookup.

Why St. Cloud operators think like air site visitors controllers

On paper, towing st. Cloud to Lake Nona or the University Area seems to be linear. In practice, it can be a sequence of selections. Is SR 528 moving, or does it make greater feel to cut up Boggy Creek Road and choose up 417 bigger? Will afternoon storms knock out the Narcoossee chronic grid and kill seven batteries in a square mile? Does UCF soccer swell visitors most that a submit-recreation tow desires staging close to Waterford Lakes in place of campus? We agenda backup trucks on gigantic occasion days and preload the deck with skates, low-profile jacks, and wheel straps desirable for lowered motors on the grounds that the University Area sees more modified cars than St. Cloud's spouse and children neighborhoods.

We also in shape the operator to the call. A low-slung sports coupe beached at a Lake Nona cut down requires a motive force with the endurance to construct a ramp with picket blocks and cushy straps so as to now not mar paint. A container truck broken down by means of Orlando International Airport's South Exit needs anybody gentle with weight distribution and DOT reflectors. A stranded dad or mum on the St. Cloud Lakefront splash pad necessities a tech who can change a tire and brighten a kid's afternoon with a pleasant wave.

Transparent expectancies on settlement, timing, and destinations

Customers probably ask what a St. Cloud to Lake Nona or UCF tow expenditures and the way destination options impression it. Pricing characteristically breaks into a base hook payment and a consistent with-mile rate. Local tows inside St. Cloud, say from Canoe Creek to Nova Road, sit down at the minimize quit. Cross-the city to Lake Nona might upload 12 to twenty miles based at the drop vicinity. UCF and Waterford Lakes pushes that to 25 to 35 miles. Night or poor-climate surcharges can observe. Instead of quoting a fake flat expense here, the straightforward wide variety is that move-metro tows often fee a moderate dissimilar of an in-the town pass. The dispatcher can supply a proper parent once your suitable pickup and vacation spot are pinned.

Timing is likewise fashioned by routing. Weekday past due afternoons build a cloverleaf of congestion round SR 417, US 192, and Narcoossee Road. Weekends are kinder until eventually storms ramp up round 3 p.m. That is why L.I Roadside Care & Towing runs a real 24 hour roadside aid brand and retains an emergency towing slot open for top-possibility positions like bridge shoulders and unlit stretches south of Harmony.

Real circumstances from the Lake Nona and University Area runs

A couple of snapshots clarify the fee of nearby timing and judgment:

- A UCF grad scholar also known as from Alafaya with an overheating gentle flickering. Instead of towing straight, we met in a close-by lot, drive-established the coolant machine, spotted a pinhole leak, and prompt a tow to a store in preference to a height-off. That resolution kept an engine on a one hundred-measure day.
- A loved ones leaving a Saturday swim at Lake Nona's Laureate Park came across a lifeless minivan. The battery validated marginal, however the alternator ripple looked mistaken. We jumped them, adopted to a safer lot close to Lake Nona High School, then towed whilst voltage sagged, combating a stall in shifting traffic.
- South of St. Cloud by the Turnpike, a horse trailer blowout positioned a pickup at a negative attitude. We stabilized the trailer tongue with cribbing, switched the truck tire adequately, and escorted to the Canoe Creek plaza for a complete tire overview. The tow truck never had to load the rig, but the roadside tools made the change.

These usually are not heroic stories. They are the form of choices that come from repeating the St. Cloud - Lake Nona - University Area triangle day after day and being concerned approximately what occurs twenty mins once we shrink back.

What units a legitimate towing service apart on these routes

You can search towing near me and get a list of names. The difference on our corridor is the mix of tools, communication, and admire for situation. The excellent tow truck - flatbed or wheel-carry - is desk stakes. What helps more is retaining tie-down tools in suitable circumstance, wearing low-clearance ramps for garages close to Lake Nona Town Center, and having heavy-obligation leap packs that don't balk at state-of-the-art delivery-stop systems.

Communication topics even more. A dispatcher who says an ETA with a range and maps out possibilities builds trust. "We may be there in 25 to 35 minutes as a result of Boggy Creek. If 417 locks up, add ten. We'll text if something variations." That sentence lowers blood rigidity while you are standing at the shoulder by means of Moss Park Road with storm clouds swelling. And there is position. Understanding that St. Cloud's downtown by way of the Veterans Memorial Library sees foot traffic at lunch, or that East Lake Toho's breezes elevate rain

sideways onto Narcoossee's true lanes, variations how we level cones, attitude the flatbed, and preserve you trustworthy.

Mid-path handoffs and destination choices

Not each and every car or truck goes dwelling. Some head to dealerships alongside Lee Vista, impartial retail outlets close Waterford Lakes, or tire authorities off Alafaya. If insurance plan or guaranty courses the choice, we accommodate. If you're unsure, we will propose possibilities depending on the fault. Transmission slip at freeway pace elements one means. Intermittent electrical gremlins head one other. A bent manage arm from a slash strike close Laureate Park essentially consistently needs a store with a sleek alignment rack and OE-point calibration for driver help cameras. We do now not diagnose last upkeep curbside. We do convey enough revel in to evade wasted journeys.

For breakdowns in neighborhoods like Terra Vista, Runnymede Oaks, or Canoe Creek Lakes, we primarily put forward short tows first, mostly inside St. Cloud, to get the automobile off the road and into a safe lot for a more thoughtful choice in daytime. That similar procedure works near UCF after late lessons, whilst fatigue and shadows can end in moved quickly choices.

Safety, legality, and the details that will become big

A short notice on defense and legality. Florida statutes require immediate removal of disabled vehicles from confined get right of entry to roadways if you'll. On SR 417 and SR 528, we cross with aim. If your automotive can roll, even barely, we booklet you to the subsequent exit ramp side or emergency pull-off. If a crash is involved and regulation enforcement is on scene, we coordinate with FHP to document and cargo efficiently. Photos are loose. So are transparent causes prior to straps touch issues on your undercarriage.

On fee and archives, we settle for commonplace cards and might textual content or electronic mail itemized invoices, excellent for college kids submitting with oldsters or people who desire compensation from Medical City employers. Release varieties are sensible, and garage quotes, if any, are explained until now a car ever leaves your sight.

The life like middle: what one can be expecting in the event you call

When you name for towing st. Cloud to Lake Nona or the University Area, we shall ask a handful of questions that establish the good truck, the most secure plan, and an honest ETA. Vehicle make and variation. Exact region - move streets help extra than a business call on my own. Drivable or now not. Any warning lighting or noises. Destination alternative. If you're on a shoulder, we are able to ask you to verify hazards and your location in or out of the automobile. For gated groups like Stevens Plantation or Anthem Park, a gate code or somebody to meet us can preclude delays.

We bring tools tailored to trendy motors. Soft straps for alloy wheels, low-profile skids for activities autos usual in the University Area, and wireless winches that speed the technique with out working auxiliary cables throughout traffic. We also hold absorbent pads to address small fluid leaks through Lake Nona's sparkling streets with out leaving a mark.

Below is our touch guide and map situation for speedy reference. Save it to your phone beneath Towing - St. Cloud so that you not at all ought to seek below strain.



St Cloud, FL 34772 Phone Number (407) 974 3446

Why availability, now not good fortune, defines “immediate”

People dialogue approximately L.I Roadside Care & Towing fast towing carrier as if there is a secret lane to Lake Nona or a personal ramp into the University Area. The fact is less difficult. Fast equals on hand, proficient, and close. We retain vehicles unfold throughout anticipated hotspots, distinctly all over the morning and overdue afternoon home windows. One would level near the Orlando Health St. Cloud Hospital edge to trap calls alongside Neptune Road. Another sits toward Narcoossee to shorten Lake Nona response. When climate apps paint a pink blot over Waterford Lakes, we aspect a truck north in anticipation in place of reaction.

That identical readiness makes L.I Roadside Care & Towing emergency towing simple. A car or truck blockading a reside lane on SR 417 is a the various call than a useless battery in a searching lot. We minimize office work to the minimal on the shoulder and end it as soon as everybody is off the street. The point will never be heroics, simply activity.

On the words other folks seek and what they easily want

Type towing close me at the UCF library or in Laureate Park and the map pins pop. But such a lot callers usually are not chasing a listing. They desire walk in the park. Will any one elect up in the dark? Will the tow truck arrive when promised? Will the operator deal with a five-yr-outdated compact with the equal care as a brand new EV? The answers are definite, sure, and definite. L.I Roadside Care & Towing 24 hour roadside guidance runs around

the clock since breakdowns forget about enterprise hours. The similar torque wrench clicks on a Corolla wheel as on a luxurious SUV. And an honest replace at the ten-minute mark topics extra than glossy slogans.

A few course-distinct facts that keep time and trouble

- If your car starts to misfire close to Medical City, exit to loads with large get right of entry to like the side close Lake Nona Town Center other than coasting onto a narrow shoulder. It speeds loading and continues you more secure.
- For UCF evening categories, park in nicely-lit edges of masses if your motor vehicle has been performing up. A bounce or tow there is swifter and much less anxious than a dim nook.
- When rain hits Narcoossee, standing water paperwork close to intersections. If you hydroplane and listen scraping, pull over and check up on. Many calls after storms involve plastic undertrays dragging, which we will resecure on-website online.
- On US 192 simply by downtown St. Cloud, are trying now not to forestall the place pass streets fan out around Pennsylvania Avenue or Massachusetts Avenue. We can guide you one block to a more desirable spot in minutes.

Small selections like those almost always imply the change among roadside guidance and a full tow.

The bottom line for St. Cloud drivers headed to Lake Nona or the University Area

Roads attach towns, and provider connects men and women to treatments while those roads chew again. If you commute from Stevens Plantation to Medical City, travel youth from Esprit to practice close to Partin Settlement, or spend late nights finishing labs close to UCF, have a plan. Keep a charger cable in the glove box, a tire gauge the place you can in finding it, and a dependable variety to your cell for towing service you confidence alongside this triangle.

When you desire guide, you desire a tow truck that arrives without delay, an operator who works with care, and a dispatcher who tells you the verifiable truth approximately timing and price. From trouble-free roadside suggestions to an extended flatbed haul, it really is the ordinary we follow on the St. Cloud to Lake Nona and University Area routes every single day.