

A boiler is one of those residence approaches you discontinue fascinated with except it stops behaving proper. That is whilst the quiet, green rhythm of heating and hot water all of the sudden becomes delays, noises, error codes, or lukewarm consequences that not at all tremendously support. In Essex, in which cold snaps can still arrive with no a great deal warning, it really is pretty much the instant when individuals bounce on the search for "boiler restore Essex" or "boiler breakdown Essex" and choose solutions quickly.

The accurate news is that many boiler faults offer you warning indicators beforehand they became a full breakdown. Some are small annoyances, a few are obvious, and about a are clearly bad. If you realize what to look for, you can actually capture points early, shelter your approach, and usally preclude the worst-case situation of being left devoid of heating or warm water in the course of top call for.

Below are the styles I tend to discover in genuine buildings, the widely used reasons behind them, and the functional steps you are able to take earlier than you ebook a call-out for boiler carrier Essex or emergency boiler repair Essex.

The warning symptoms you could no longer ignore

Boilers have a tendency to fail in tiers. Not every loved ones will get the equal indicators, however the same different types of fault most often demonstrate up throughout brands and installations. It helps to split "it feels a little off" from "here is telling you a thing is incorrect."

A first sign is usually how the boiler sounds. A suit boiler has a consistent, controlled operation: fan ramps up, burner ignites, then it modulates or cycles stylish on call for. When something is off, you would listen kettling (a limescale-like rumbling), banging, repeated ignition attempts, or a fan that appears to be like to run longer than usual. If the noise is new, chronic, and getting worse over several heating cycles, it truly is your clue.

Then there is sizzling water functionality. If warm water immediately takes longer to come with the aid of, or the temperature swings between too scorching and no longer hot adequate, it's going to element to considerations with the interior controls, a sensor, scale buildup, or a move situation. Sometimes the heating circuit works great while sizzling water struggles, and that difference enables a technician narrow down the likely reason rapidly.

Heating performance tells any other story. If radiators are cold at the major yet warm at the lowest, which will recommend trapped air or movement themes. If a few rooms get warm and others not at all do, it may possibly be a balancing or zoning concern, now not simply the boiler itself. But if the boiler retains reducing out, displaying errors codes, or often trying to restart, you are looking at a fault that needs recognition.

Finally, there are signals that are less about convenience and more approximately safe practices. If you ever scent gasoline, if there are indications of soot across the boiler, or in case you notice a continual burning odor that doesn't event conventional operation, do now not "wait and see." That is where gas security certificates Essex paintings and gasoline safeguard checks come in, considering the fact that the priority is having the procedure established as safe.

Pressure, temperature, and "it's appearing bizarre" moments

One of the maximum positive matters homeowners can reveal is boiler force. Many systems run at around 1 to one.5 bar while chilly, but definitely the right figure is dependent at the adaptation and deploy. Your boiler

label or handbook will demonstrate the objective number. If you might be shedding force often, it many times capability a leak somewhere inside the process, the tension aid direction is discharging, or there is an enlargement vessel difficulty. If the tension rises too high, it may point to a fault that demands diagnostic paintings other than topping up indefinitely.

Watch for the development, no longer simply the number. A one-time rigidity dip after long state of no activity isn't the same as a stable drop over days. If rigidity falls and retains falling, the boiler might nevertheless functionality quickly, however the components is at chance and the underlying fault will in many instances develop more dear the longer you delay.

Temperature behaviour matters too. If the boiler is going for walks however not achieving the set temperature, the issue is perhaps scale, a erroneous sensor, airlocks, or a stream problem. If the boiler is normally turning itself off though the controls are set efficiently, it may well be responding to overheating, ignition screw ups, or safeguard circuit triggers.

I even have considered houses in which the boiler "looks great" in summer due to the fact heating demand is minimal, then winter arrives and the boiler starts quick cycling or failing all through chilly starts. In those circumstances, the fault might have been construction quietly: partial blockage, worn components, or deposits that in basic terms end up seen once the equipment runs more intensely.

Noise clues: kettling, banging, and atypical ignition attempts

Noise is mostly the earliest straightforward report your boiler offers you.

Kettling is the basic one. It feels like a kettle boiling contained in the boiler, more often than not a rhythmic rumble or vibrating hiss. It commonly suggests limescale buildup in the warmness exchanger. Essex properties can have varying water qualities depending on local supply, and in spite of suitable resource, not easy water and temperature biking can boost up scale formation. Kettling seriously isn't simply anxious. It reduces warmness switch performance, makes the boiler paintings harder, and can eventually result in areas to endure.

Banging or thuds will have exceptional causes. Sometimes that's air in the technique, occasionally it really is force-comparable, and on occasion it truly is go with the flow or stream concerns. If the banging strains up with burner ignition or with the boiler ramping up, it indicates an inner manage or water circulation concern in preference to random constructing flow.

Repeated ignition tries are extraordinary from commonly used ignition. Many smooth boilers try to ignite, fail, vent, then strive once again. If that takes place typically, it's worthwhile to be managing a fuel provide difficulty, defective ignition materials, condensation leadership problems, or combustion good quality matters. That is simply not a "tighten a cable and wish" state of affairs. A true analysis is needed, seeing that incomplete combustion can produce unsafe byproducts.

If you are ever in doubt whether a noise is "inside of popular quantity," that could be a first rate time to agenda boiler carrier Essex protection, on the grounds that a serviced boiler generally runs quieter and more predictably. If you wait unless that's failing, you most likely lose the merit of early intervention.

Error codes and what they most commonly mean

Most boilers reveal an errors code while some thing is going mistaken. The temptation is to treat the code like a diagnosis it is easy to appearance up and solve your self. In apply, the code is a start line, not the total tale.

A code may perhaps tell you there may be low tension, a fan quandary, a thermostat or sensor fault, ignition trouble, or a circulate limit. The difference is in what the boiler is doing whilst the code appears. Does it turn up when heating starts offevolved, whilst sizzling water is often called, after a sure time, or handiest while the boiler is bloodless? Those "when" details help title whether or not the fault is due to a failing component, a blockage, or an outside technique situation.

If your boiler shows repeated codes, keep resetting it over and over. Resetting can clear the demonstrate yet it does no longer restoration the underlying motive the boiler helps to keep tripping. You can become routinely walking the boiler in a kingdom that worsens the fault, to illustrate by using aggravating trapped air, scale buildup, or combustion inconsistencies.

If you name for boiler breakdown Essex assist, having a notice of the codes, the time they show up, and what else used to be happening in the domicile (like numerous sizzling taps used at the same time) can accelerate the troubleshooting.

Limescale, sludge, and why circulation complications exhibit up as "boiler matters"

Not all boiler faults delivery in the boiler. Plenty delivery upstream, in the plumbing circuit.

Over time, systems can collect sludge or magnetite particles, peculiarly in older installations or in which protection has been limited. That reduces circulation, makes the boiler work harder, and can bring about overheating or repeated lower-outs. Symptoms can appear like boiler failure but the underlying cause is decreased waft thru the heat [Burger van gas Essex](#) exchanger.

This is wherein Power Flush Essex paintings occasionally enters the dialog. A vitality flush is simply not perpetually the properly collection, however when there's heavy particles, negative move, or chronic circulation-same fault patterns, it might restoration manner cleanliness and expand boiler functionality. It is a judgment call. If the system is fairly blank, the flush will be needless. If it's far severely restrained, leaving it may well suggest repeating the related fix cycle even as the debris maintains dressed in on method.

Even while a technique does now not want a complete flush, early boiler provider Essex maintenance can come with tests that level to deposits, pass trouble, or bleeding and balancing troubles. A technician who knows the sample will most commonly diagnose no matter if the boiler itself is failing or even if that is being pressured to paintings in a clogged environment.

When sizzling water is the in basic terms problem

A conventional real-international state of affairs is: heating works, but warm water is weak, delayed, or inconsistent. Or the other, hot water is high-quality however heating struggles.

If scorching water is not on time, it could actually be a drift control or sensor hassle, or oftentimes a scaling subject in areas that move warm to the household hot water circuit. If scorching water temperature fluctuates, it will probably level to a mixing or control fault, or to a build-up that influences how shortly warmth is transferred and regulated.

I actually have additionally noticed situations the place the boiler seems to be organic on diagnostics, yet a faucet or shower valve is causing abnormal go with the flow styles. That is why it is price questioning beyond the boiler. If your private home has a mixer shower, thermostatic mixing valve, or older faucets, the

total equipment behaviour topics. A plumber or a blended plumbing and boiler technician can lend a hand money even if the problem is on the boiler or within the distribution.

If you are in a place where LPG is used, infrequently boilers and fuel materials behave a little otherwise depending on conversion country and appliance setup. If you've got you have got LPG Essex supply, do not imagine parts are similar to average gas configurations. That is yet another motive to make use of a technician who is familiar with the set up specifics.

Safety signs: what to do in an instant, no longer later

Boiler restore is one issue, but safeguard is every other. Here are the "act now" different types I tell owners to deal with critically.

If you odor gas, swap off the boiler, ventilate the house if it's miles protected to accomplish that, and speak to your gasoline emergency provider or a certified engineer urgently. Do not attempt to pale it, reset it sometimes, or troubleshoot when the scent persists.

If you spot black soot marks round the boiler, indicators of spillage, or the boiler sector looks surprisingly sooty in contrast with past operation, that could imply combustion subject matters. That is a call-out, no longer a "display it."

If the boiler often locks out and you is not going to get it to function often, or if there are signs and symptoms of overheating, you must always discontinue riding it and manage inspection. Boilers have security controls for a purpose. If the ones are triggering, the technique demands an appropriate repair.

For annual workouts, Gas security certificate Essex standards and gasoline protection tests don't seem to be simply office work. A right Gas Safety Check is helping name faults and deterioration formerly they turned into failures. Even when you've got a landlord certificates requirement, house owners enjoy the similar idea: investigate, verify, record, repair.

A useful early-caution checklist

If you desire a useful method to tune what's taking place, use this as a rapid reference. It seriously isn't a DIY diagnosis, it can be a approach to compile powerfuble clues that make the eventual restore quicker and inexpensive.

- Note the boiler's tension studying whilst the formula is cold, and even if it drops over 1 to 2 days
- Watch for new noises, peculiarly kettling, banging, or repeated ignition tries
- Record how scorching water behaves, adding extend time and temperature swings
- Check no matter if heating is inconsistent across rooms, as an example chilly top ingredients of radiators
- Write down the exact error codes and once they happen, heating, sizzling water, or equally

When a technician arrives, these details in most cases turn a imprecise grievance right into a transparent path to diagnosis. It may aid rule out non-boiler reasons, like blocked strainers within the plumbing circuit or air inside the components.

The business-off: servicing now versus waiting for a breakdown

There is a factual monetary and comfort distinction among early intervention and emergency repair.

When you e book boiler provider Essex preservation, you might be paying to evade things, discover put on, fresh up straight forward causes of bad efficiency, and verify riskless operation. When you watch for boiler breakdown Essex warning signs to top, you more often than not tackle constituents that experience already been burdened via repeated birth-cess cycles. That is while name-outs check more, and repairs can increase seeing that a secondary issue has developed.

That mentioned, now not each fault resolves with the 1st restore. Sometimes a repair addresses the immediate fault but exhibits that the manner has deeper considerations, like power sludge affecting flow. That is why it could possibly be worthy asking questions like: is the fault doubtless simply by a component failure, or is it being due to a system cleanliness or glide worry? A marvelous engineer can provide an explanation for what they saw and what it capability for long run reliability.

If you might be making plans a boiler set up Essex alternative in view that the procedure is antique or repairs shop returning, it's powerfuble to deal with the decision as a comparability between restore quotes through the years and the lengthy-term reliability of a brand new unit. A alternative will likely be price-effective when a boiler is near quit of lifestyles, however it should always nonetheless be approached with brilliant possible choices: top sizing, right kind controls, and install that respects the prevailing pipework and flue situation.

How plumbers, gas engineers, and relevant amenities fit together

Boilers do not exist in isolation. The plumbing Essex edge concerns. Pipework routing, filtration, venting, and components balancing all have an effect on boiler behaviour. If you've got had past plumbing paintings, a brand new radiator, a blocked drain, or maybe a exchange to hot water utilization styles, that could have effects on how the boiler cycles.

In a few houses, the boiler is purely component to a much wider gas or gas setup. People often additionally have fuel cookers, gasoline fires, and comparable appliances inside the identical assets. If you're arranging maintenance, it makes sense to coordinate. For example, Gas Fire Service Essex and Gas Fire Installation Essex work deserve to not be not noted just considering the boiler is the principle heating source. Combustion appliances share concepts of reliable operation, venting, and overall performance. A Gas Safety Check Essex manner across home equipment can assist store everything consistent.

If you actually have a gas cooker, Gas Cooker Installation Essex work can influence fuel source configuration and power law. That does not on the whole purpose boiler faults directly, however it'll create context. If the condo has varied gas appliances with shared source strains, and one appliance has an challenge, the process total is additionally affected.

And in ultra-modern houses, heating is at times paired with air relief programs. If you will have Aircon Essex or Air Conditioning Essex installed, it could replace how of us warmness and funky rooms, which indirectly influences how in many instances the boiler runs. That can influence how speedy kettling or movement problems changed into great, on the grounds that the boiler runs differently depending on call for.

Even extraordinary setups exist. Some industrial websites and pop-up operators have distinguished heating and gas utilization demands, like a Burger van gasoline setup. If which is your condition, the identical concept applies: early indications will have to set off early movement. Gas safety and riskless operation be counted even more should you depend on a procedure for industry.

What to invite whenever you e-book boiler restore Essex

When you name an engineer, you want clarity. Not imprecise reassurance, a transparent explanation of what is likely mistaken and what will be completed next.

Ask what diagnostic steps they can take and what they expect to uncover. If it really is an ignition or combustion-connected element, ask what exams will probably be achieved to guarantee safety and right kind operation. If this is a movement trouble, ask whether the formula exhibits signs of sludge or movement restriction, and even if a Power Flush Essex mindset is correct.

If the engineer suspects a half failure, ask for the in all likelihood reason why the component has failed. Some formulation fail due to the primary wear, others fail because the approach is grimy or the boiler is working external superior conditions. Understanding the "why" reduces the probability of repeat failures.

Also ask what you can actually observe after the restore. For instance, if the fault changed into concerning force loss or growth vessel performance, that is cheap to ask how traditionally you deserve to look at various tension and what "regularly occurring" versus "no longer generic" feels like. If the issue is set scaling, ask no matter if there are signs and symptoms you need to stay up for, like kettling reappearing.

How early analysis modifications outcomes

I take into account a property owner in Essex who often called after noticing the boiler had started producing a low rumble that wasn't there the week earlier. Hot water changed into nevertheless usable, heating used to be k, and the error codes have been now not consistent. Instead of resetting and ready, they said whilst the noise came about, how long it lasted, and whether or not it coincided with warm water demand.

That small volume of monitoring made a tremendous big difference. The engineer may want to focus on patterns and most probably warmth exchanger scaling behaviour, instead of treating it as a accepted noise grievance. The repair changed into nevertheless needed, yet it became done at a level where the machine was once now not but failing outright. The home-owner evaded the tension of a complete winter breakdown, and the restoration lasted longer due to the fact that the underlying cause was once addressed rather than masked.

That is the authentic expertise of spotting faults early. You do no longer just fix functionality, you ward off escalation.

Planning beforehand: maintenance, servicing, and alternative decisions

There comes a aspect where "how a lot longer can it ultimate" turns into a factual question. If you might be booking repeated boiler fix Essex call-outs, or the boiler is normally tripping, that is most of the time while a broader assessment makes experience.

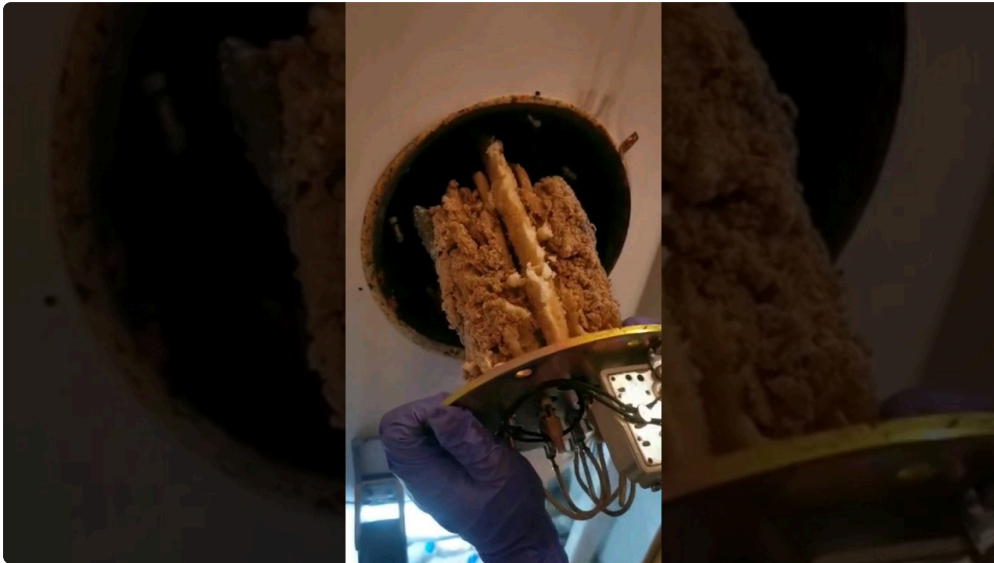
A boiler deploy Essex plan may still take into account not in simple terms the equipment replacement, but also the formula readiness: pipework circumstance, latest radiators, water first-rate, controls, flue circumstance, and the way the house at the moment uses heating. A safe install isn't really practically fitting a brand new boiler. It is set matching the boiler to the equipment so it's going to run effectually with no fixed stress.

Servicing nevertheless concerns even with a new unit. Boiler carrier Essex continues to be marvelous because it continues functionality, assessments protection and combustion, and identifies early put on ahead of it turns into a failure. The difference is that a brand new boiler usually affords you a longer window beforehand serious topics, and it continually runs extra effectively, which may assist reduce rigidity at the machine.

If you're in a rented belongings or landlord situation, the documentation matters too. Gas defense certificates Essex compliance could be dealt with on schedule, and upkeep must always be incorporated into that timeline the place that you can imagine. A boiler it really is due for a service but could also be appearing warning signs and symptoms is a most appropriate candidate for early motion.

Final emotions you can actually act on this week

If your boiler has began performing slightly off, treat it like a message, not a mystery. Pressure trends, noise differences, scorching water behaviour, and errors code timing are all worthy indicators. The earlier you respond, the more likely the restore might be hassle-free and the much less most likely you are going to be going through a surprising full failure.



Book boiler carrier Essex when things are nevertheless operating. If you are already seeing warning signs, don't anticipate the worst day. A planned fix is sort of always more effective than an emergency one, no longer just for check, however for peace of mind. And if safety signs tutor up, take them significantly and get the components checked. Gas safe practices certificates Essex paintings is there for a rationale, and a adequately recognized boiler is a more secure boiler in each and every experience.